

ERA ONE

The system includes 1, 2, 4 and 9 channel transmitters and prewired receivers with connector, with and without built-in transmitter.

433.92 MHz rolling code, with management of Identity Codes and Certificates, self-learning and built-in proximity receiver; with 72 bit O-Code encoding, also compatible with receivers with Nice FLOR encoding.

Available in versions with multiple input sequential encoding (Era OneC).

Evolved: uses data processing and recognition systems that increase its degree of security and deliver a threefold reduction in automation response times.

Easy memorisation, even at a distance, thanks to Opera receivers.

There are two options for enabling a new transmitter, **even at a distance from the system:**

- using a transmitter already programmed in the receiver, thanks to the enabling **Code exchange** between the two (figure 1);
- using the Nice O-Box connection interface; the receiver's **Certificate** is entered by just placing the new Era One next to the O-Box and following the guided procedure on a PC or PDA (figure 2).

Safe, if a transmitter is stolen or lost, with the O-Box the user can:

- **replace it,** maintaining the same functions as in the previous one, **disable** the old transmitter by increasing the priority level on the new Era One.

Extremely practical: using the O-Box software, the Era OneC version allows whole packs of 10 devices to be programmed in a single procedure, without even opening them!

Elegant and convenient: the Era One transmitter can be used as a stylish, high-tech keyring or fixed to the wall or your car's dashboard with the handy support included in the pack.

Era OneFM, ideal for use in cities or places where many devices are present.

868.46 MHz Rolling Code transmitter line, using frequency modulation (FM), less sensitive to interference than amplitude modulation AM.

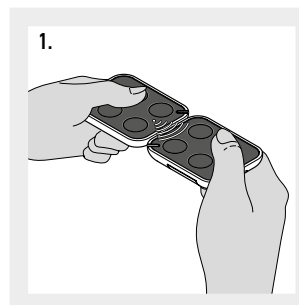
ERA ONE TRANSMITTERS

CODE	DESCRIPTION	PCS/PACK
ON1E	1 CHANNEL, 433.92 MHz	10
ON2E	2 CHANNELS, 433.92 MHz	10
ON4E	4 CHANNELS, 433.92 MHz	10
ON9E	9 CHANNELS, 433.92 MHz	10
ON1CE	1 CHANNEL, 433.92 MHz, WITH MULTIPLE INPUT SEQUENTIAL ENCODING	10
ON2CE	2 CHANNELS, 433.92 MHz, WITH MULTIPLE INPUT SEQUENTIAL ENCODING	10
ON4CE	4 CHANNELS, 433.92 MHz, WITH MULTIPLE INPUT SEQUENTIAL ENCODING	10
ON1EFM	1 CHANNEL, 868.46 MHz	10
ON2EFM	2 CHANNELS, 868.46 MHz	10
ON4EFM	4 CHANNELS, 868.46 MHz	10
ON9EFM	9 CHANNELS, 868.46 MHz	10

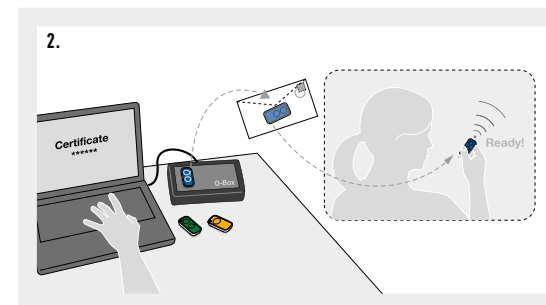
TRANSMITTER TECHNICAL SPECIFICATIONS

	Carrier frequency	Estimated range	Encoding	Power supply	Battery life	Protection class	Dimensions Weight
ON_E, ON_CE	433.92 MHz	200 m (outdoor); 35 m (if inside buildings)*	O-Code 72 bit; rolling code	3 Vdc, type CR2032 lithium battery	2 years (with 10 transmissions per day)	IP40 (use in protected environments)	44x55x10 h mm 11 g
ON_EFM	868.46 MHz						

* Transmitter range and receiver reception capacity may be affected by any devices operating on the same frequency in the area.



1. CODE EXCHANGE BETWEEN A MEMORIZED TRANSMITTER AND A NEW ONE, TO BE MEMORIZED.



2. POSSIBLE MEMORISATION USING NICE O-BOX AND THE "CERTIFICATE".