

ERA INTI

The colourful line of 1 and 2 channel miniaturised transmitters, available in six colours.

433.92 MHz rolling code, with management of Identity Codes and Certificates, self-learning and built-in proximity receiver; with 72 bit O-Code encoding, also compatible with receivers with Nice FLOR encoding.

Evolved: uses data processing and recognition systems that increase its degree of security and deliver a threefold reduction in automation response times.

Easy memorisation, even at a distance, thanks to Opera receivers.

There are two options for enabling a new Inti transmitter, even at a distance from the system:

- using a transmitter already programmed in the receiver, thanks to the enabling **Code exchange** between the two (figure 1);
- using the Nice O-Box connection interface; the receiver's **Certificate** is entered by just placing the new Inti next to the O-Box and following the guided procedure on a PC or PDA (figure 2).

Safe, if a transmitter is stolen or lost, with the O-Box the user can:

- **replace it,** maintaining the same functions as in the previous one, **disable** the old transmitter by increasing the priority level on the new Inti.

Inti can be used as keyring thanks to the lace included in the pack.

TRANSMITTERS INTI

| CODE | DESCRIPTION | PCS/PACK |
|---------|---|----------|
| INTI1Y | 1 CHANNEL, 433.92 MHz, YELLOW | 10 |
| INTI2Y | 2 CHANNEL, 433.92 MHz, YELLOW | 10 |
| INTI1R | 1 CHANNEL, 433.92 MHz, RED | 10 |
| INTI2R | 2 CHANNEL, 433.92 MHz, RED | 10 |
| INTI1L | 1 CHANNEL, 433.92 MHz, LILAC | 10 |
| INTI2L | 2 CHANNEL, 433.92 MHz, LILAC | 10 |
| INTI1G | 1 CHANNEL, 433.92 MHz, GREEN | 10 |
| INTI2G | 2 CHANNEL, 433.92 MHz, GREEN | 10 |
| INTI1B | 1 CHANNEL, 433.92 MHz, BLUE | 10 |
| INTI2B | 2 CHANNEL, 433.92 MHz, BLUE | 10 |
| INTI1 | 1 CHANNEL, 433.92 MHz, BLACK | 10 |
| INTI2 | 2 CHANNEL, 433.92 MHz, BLACK | 10 |
| INTIKIT | THE KIT CONTAINS: 3 TWO-CHANNEL INTI UNITS (COLOURS RED, GREEN AND BLUE) 1 OX2 RECEIVER. | |

TRANSMITTER TECHNICAL SPECIFICATIONS

| | Carrier frequency | Estimated range | Encoding | Power supply | Battery life | Protection class | Dimensions Weight |
|--|-------------------|---|--------------------------------|--|---|--|----------------------|
| INTI_Y, INTI_R, INTI_L, INTI_G, INTI_B, INTI | 433.92 MHz | 150 m (outdoors); 30 m (if inside buildings)* | O-Code 72 bit; rolling code | 3 Vdc; lithium battery type CR2032 | 2 years (with 10 transmissions per day) | IP40 (use in protected environments) | 30x56x9 h mm 14 g |

* Transmitter range and receiver reception capacity may be affected by any devices operating on the same frequency in the area.

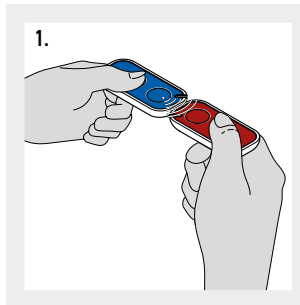


INTIKIT
THE KIT CONTAINS:
3 TWO-CHANNEL INTI UNITS
(COLOURS RED, GREEN AND BLUE)
1 OX2 RECEIVER.

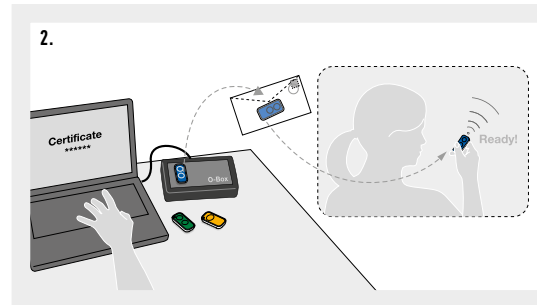
UNINTIVERSAL!

**Inti, the universal control!
Ideal for use in apartment
blocks or multi-user systems.**

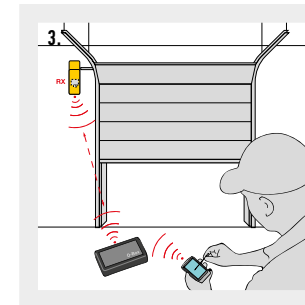
Easy and cheap to install: combined with the OX2 universal receiver, the Inti transmitter is able to control and manage any automation, including pre-installed systems.



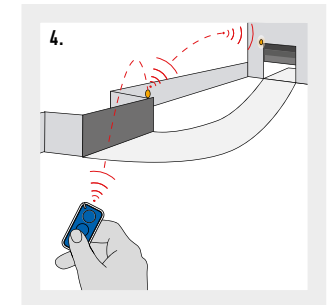
1. CODE EXCHANGE BETWEEN A MEMORIZED TRANSMITTER AND A NEW ONE, TO BE MEMORIZED.



2. POSSIBLE MEMORISATION USING NICE O-BOX AND THE "CERTIFICATE"



3. THE PRESENCE OF A "TRANSMITTER" IN THE OX1T, OX2T AND OX4T RECEIVERS ALLOWS RADIO CODES TO BE ACCESSED BY MEANS OF THE O-BOX MULTIFUNCTION INTERFACE.



4. OX1T, OX2T AND OX4T RECEIVERS CAN BE USED AS SIGNAL REPEATERS.

FOR SWING GATES

FOR SLIDING GATES

BARRIER GATE
OPERATOR SYSTEMS

FOR GARAGE
AND INDUSTRIAL DOORS

CONTROL SYSTEMS
AND ACCESSORIES

COMPATIBILITY TABLE
AND ALPHABETICAL INDEX